

HABITAT CLADDING

COEN
COMPOSITE WOOD

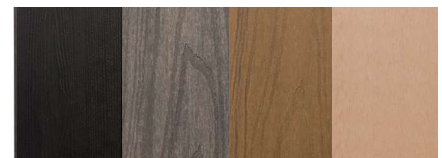


Modern architectural design

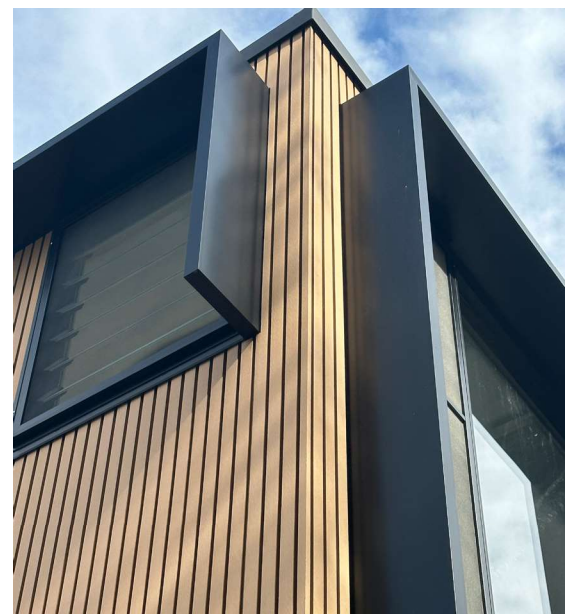
Clean design lines with wood grain or sanded finish. Great for the harsh Australian conditions..

- Quick installation
- Long life span
- Won't bow, warp or twist
- Low maintenance
- Fire rated to AS NZ 3837 & AS NZ 1530-3

COLOURS EMBOSED & SANDED FINISH



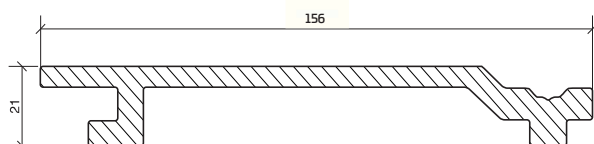
Charcoal Shale Grey Marine Teak Oak



HABITAT CLADDING

SHIPLAP CLADDING PROFILE

(Shown at 1:2)

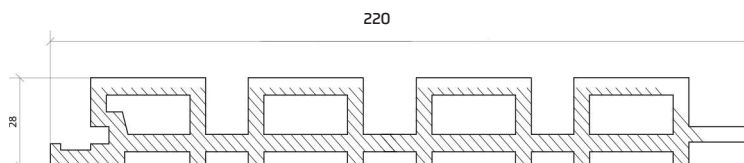


156mm x 21mm x 5.4m



CASTELLATED CLADDING PROFILE

(Shown at 1:2)



220mm x 28mm x 2.9m



TECHNICAL SPECIFICATIONS	SHIPLAP	CASTELLATED	Comments
Dimensions	156 x 21mm x 5.4m	220 x 28mm x 2.9m	Embossed or Sanded Finishes
Boards / Pack	210	85	
Minimum ground clearance	100	100	
Minimum clearance over concrete	50	50	
Baton centres (min & max distance) – Domestic	300 to 600	300 to 600	In high wind areas, baton spacing should be 300mm
Batten size	40 X 30	40 X 30	
Batten with but joining*	100 X 30	100 X 30	
Minimum end-gap (butt join)	4mm	4mm	
Maximum overhang from last batten	50	50	
Screw distance from cladding board edges	Min 15, max 25	Min 15, max 25	
Joist fastening screws	4 to 5mm x 40 to 60mm pending joist size	4 to 5mm x 40 to 60mm pending joist size	Screws must comply with AS 3566 Self Drilling Screws for the Building and Construction Industries.
Cladding fastening screws	3.5x30 stainless steel	3.5x30 stainless steel	Screws must comply with AS 3566 Self Drilling Screws for the Building and Construction Industries.

*Product can be butted together, provided double fixing on each piece at the butt joint, with minimum clearance holes. All other fixing points must have a clearance hole to allow for thermal expansion.

COEN
COMPOSITE WOOD

BETTER FOR YOU. BETTER FOR THE ENVIRONMENT.

Brisbane, Australia
T 1800 105 031
E info@coen.com.au
W www.coen.com.au